



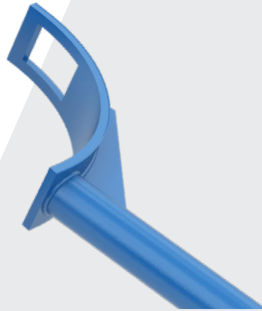
ARGUS

Manufacturing Intelligent Solutions

PIG VALVE ENTRY PLUG WRENCHES

These wrenches are available for removing entry caps from Argus Pig Valves.
Available for sizes 2", 3", 4", or 6" only.
Please specify the valve size when ordering.

OPTION 1:

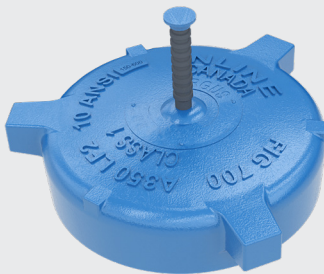


Wrench End for "Hammer Style" Entry Cap

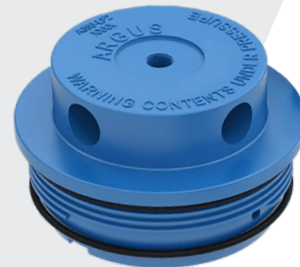
OPTION 2:



Wrench End for "Wrench Style" Entry Cap



"Hammer Style" Entry Plug (Cap)



"Wrench Style" Entry Plug (Cap)



Hex End, for operating all Argus Pig Valves.
This is welded on the opposite side of both of the
above wrenches.

1.888.434.9451

argusinnovates.com